

Diurnal and Weekly Cycles in IPv6 Traffic

Stephen Strowes

Yahoo

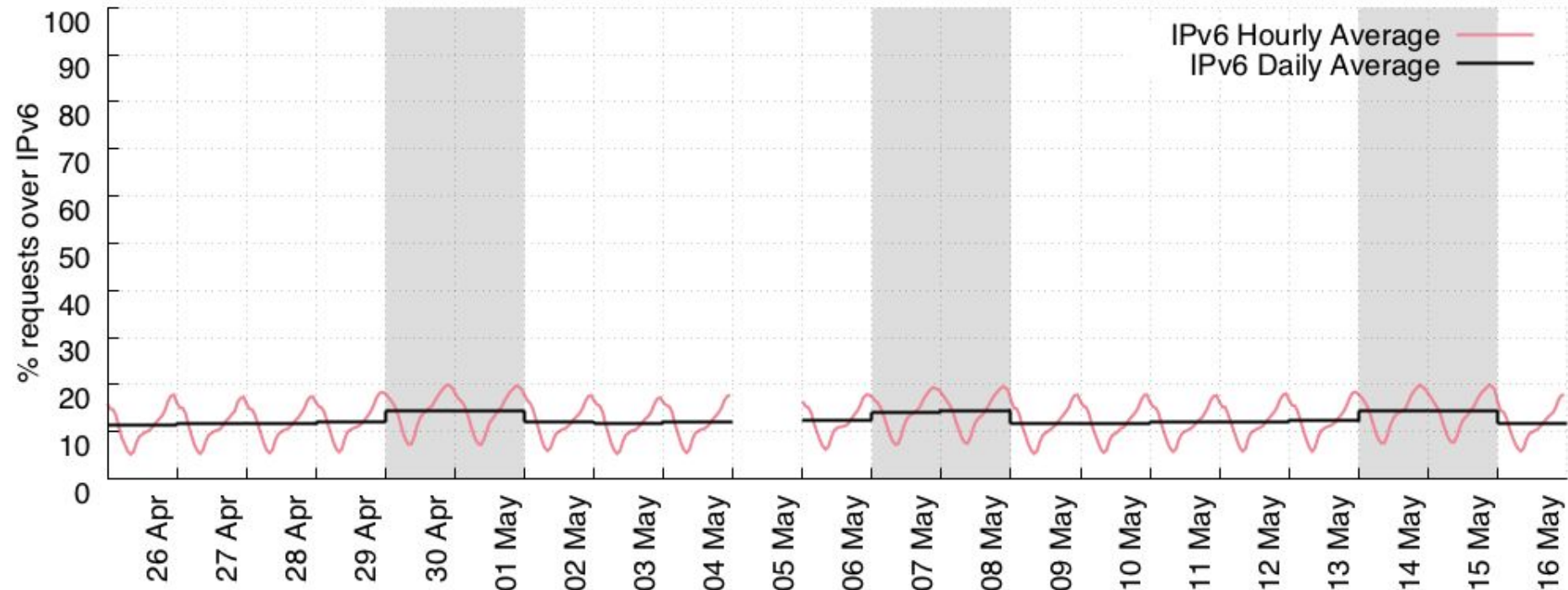
sds@yahoo-inc.com

Motivation

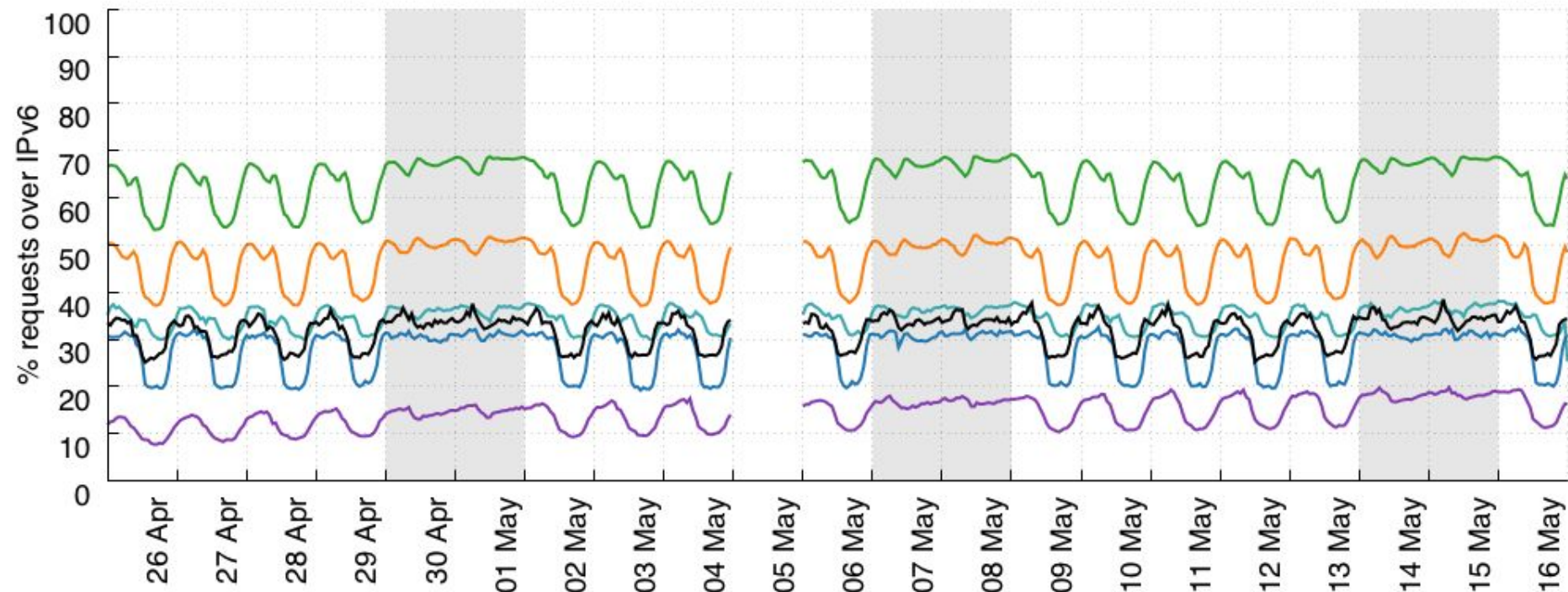
Non-trivial IPv6 deployments in access networks impacts capacity planning, peering, DNS load balancing

(Also, people kept asking why IPv6 is 2-3% appears higher at weekends)

Global View

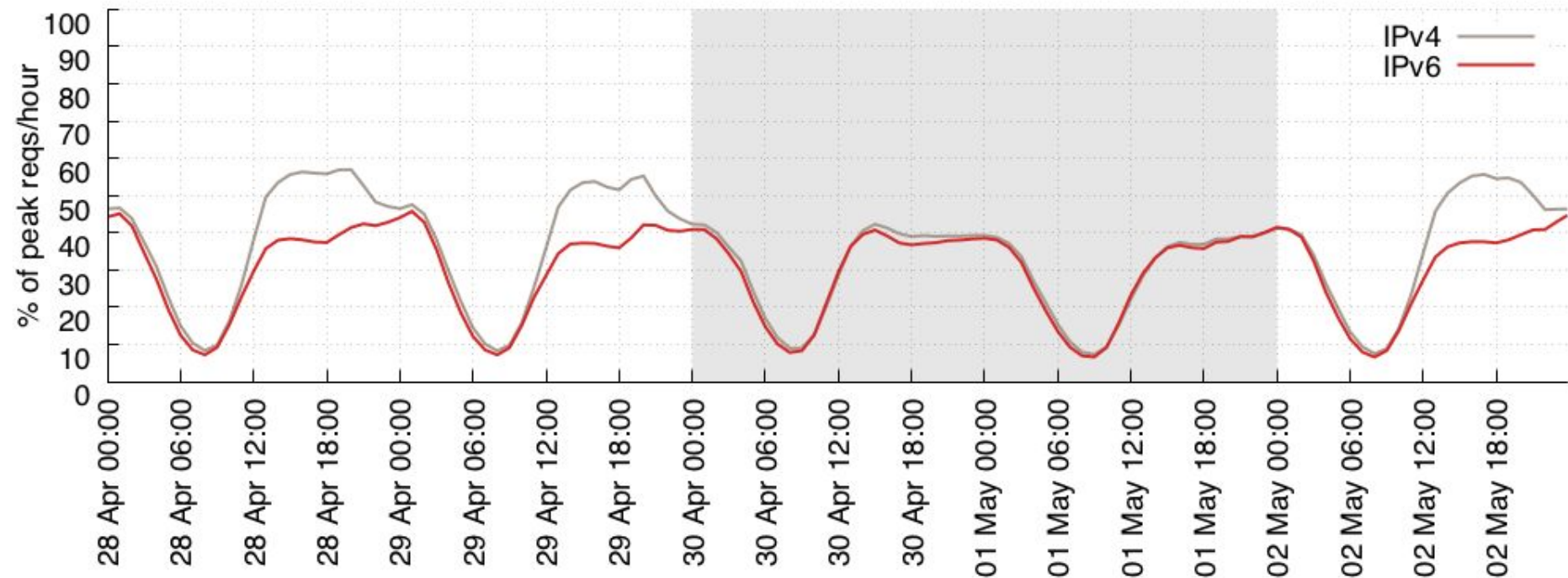


Weekly: More v4 on weekdays



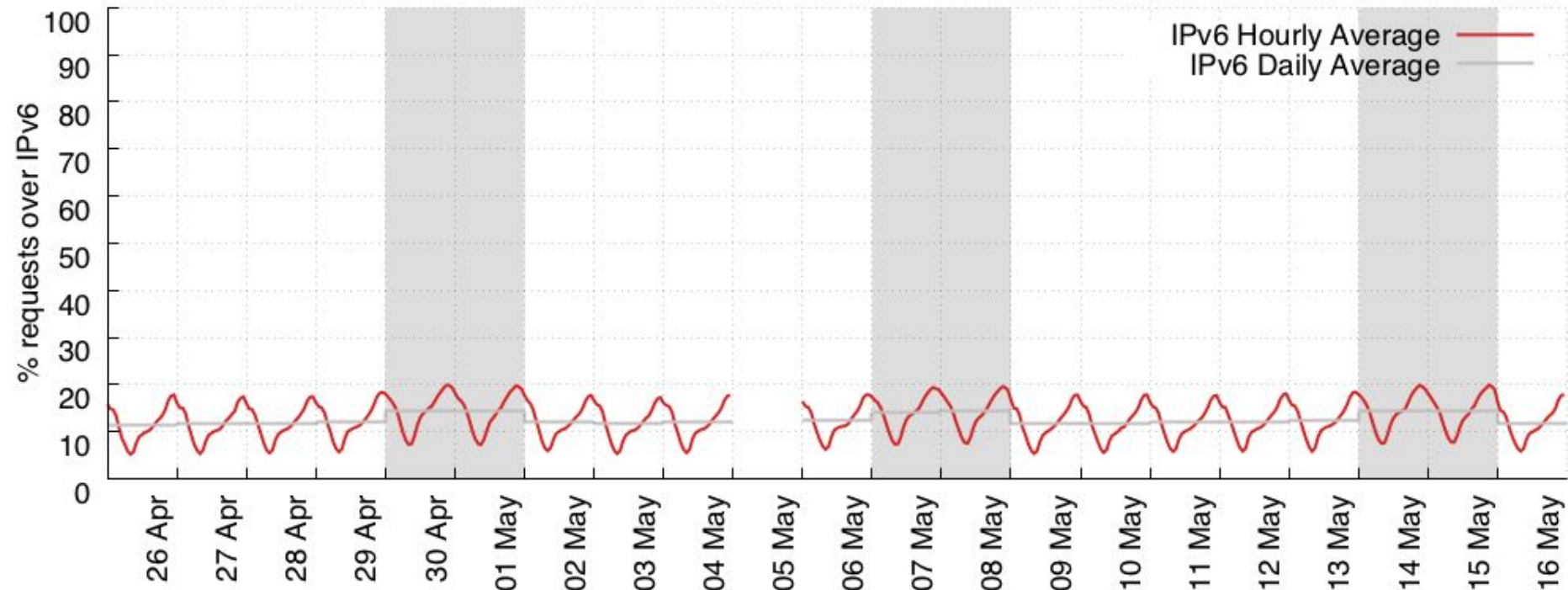
Each line above is an ASN representing a fixed-line domestic ISP in the US

Weekly: More v4 on weekdays

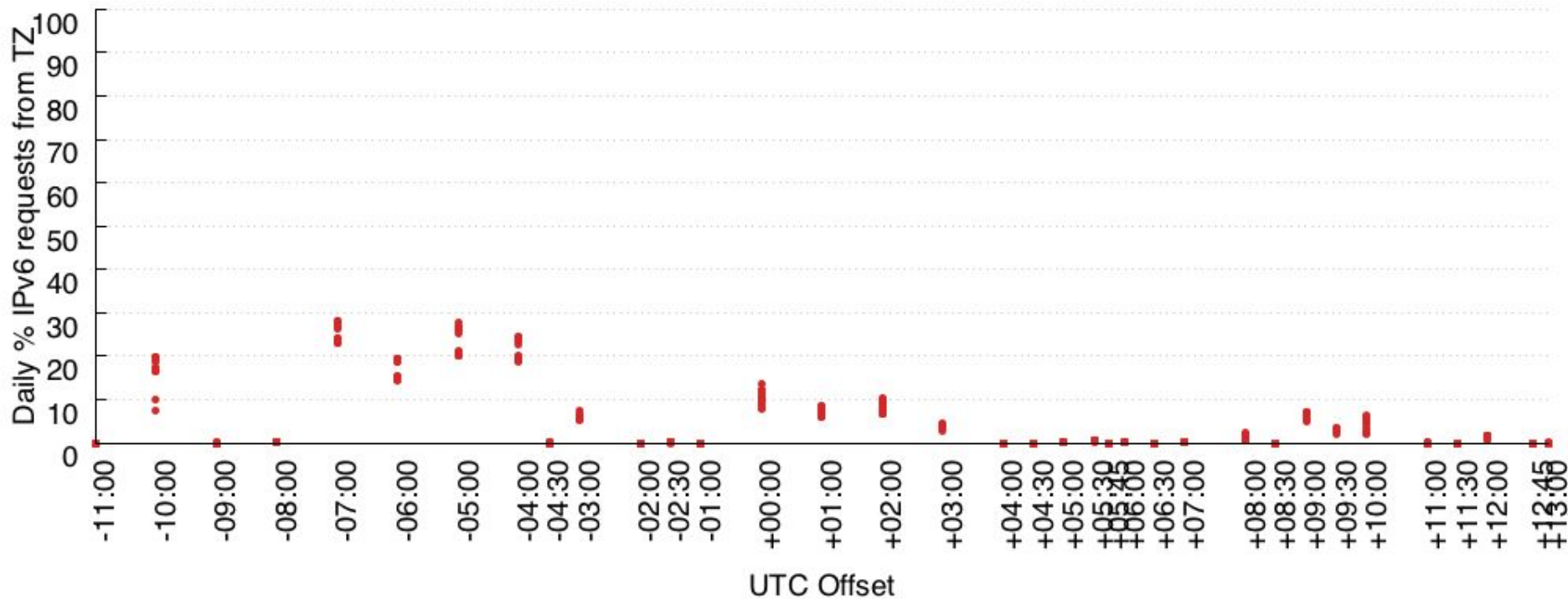


Traffic above represents #reqs from the ASNs in the previous slide; additional IPv4 traffic on weekdays

Global View



Daily: Traffic Originates in the West



Points are % IPv6 of all requests originating from the *time zone* of the geo-located IPs; one point per day

Conclusion

- IPv6 eyes are primarily:
 - At home
 - In the Americas and Europe